



Roland Water Tower Park

Community Engagement Meeting #1

November 5th, 2020

**Unknown
Studio**

Agenda

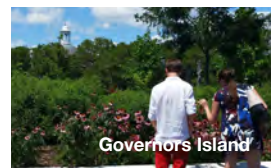
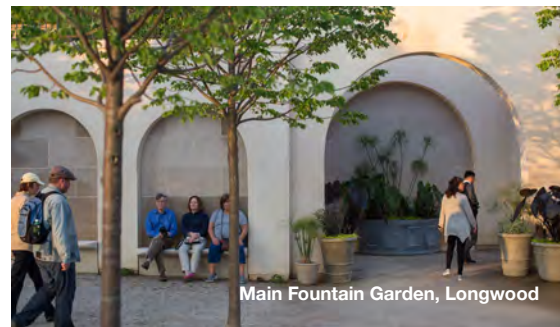
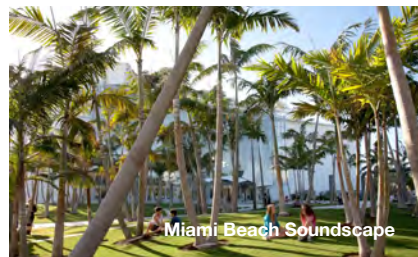
1. **Team Introductions** - *3 mins*
2. **Community-Led Concept Design Schedule** - *3 mins*
3. **Site Analysis Presentation** - *20 mins*
4. **Breakout Room Discussion** - *20 mins*
 - a. What community needs and histories should inform the park?
 - b. What are you most excited to see in the park?
 - c. What gives you anxiety about the park?
5. **Full Group Report Back** - *10 mins*
 - a. Next Steps & Upcoming Meetings
 - b. Google Survey Link

Unknown Studio is a landscape architecture and urban design practice with a deep belief in the **power of the designed landscape to bring joy, wonder, beauty and improved quality of life to all**. Through the **craft** of design and engaged collaboration we create new places and **microclimates, tell stories, unearth memories** and amplify the **culture and ecology** of the places in which we live.



Unknown Studio

45 Years combined experience in public gardens and park design & delivery





Unknown
Studio
(Old Goucher
Neighborhood)

Printed and Published by THOMAS F. B. MURPHY & CO. BALTIMORE

A BIRDS-EYE VIEW OF THE HEART OF BALTIMORE

Unknown Studio Team



Claire Agre, PLA
Principal / Co-founder



Nick Glase, PLA, RA
Principal / Co-founder



Dave Zielnicki, PLA
Principal



Meg Baldwin
Landscape Architect



Lisa DuRussel, PLA
Landscape Architect



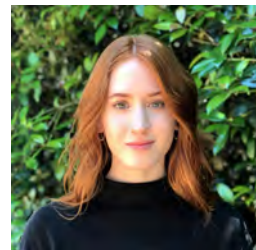
Dana Kash
Landscape Designer



Erin Rudemiller
Landscape Designer



Juwan McIntyre
Landscape Designer



Sophie Pawlak
Landscape Designer

MK Consulting Engineers



Marianne Crampton, PE
Principal



Steve McCalmont
Site/Civil PM



George Bakalyar
Senior Cost Estimator

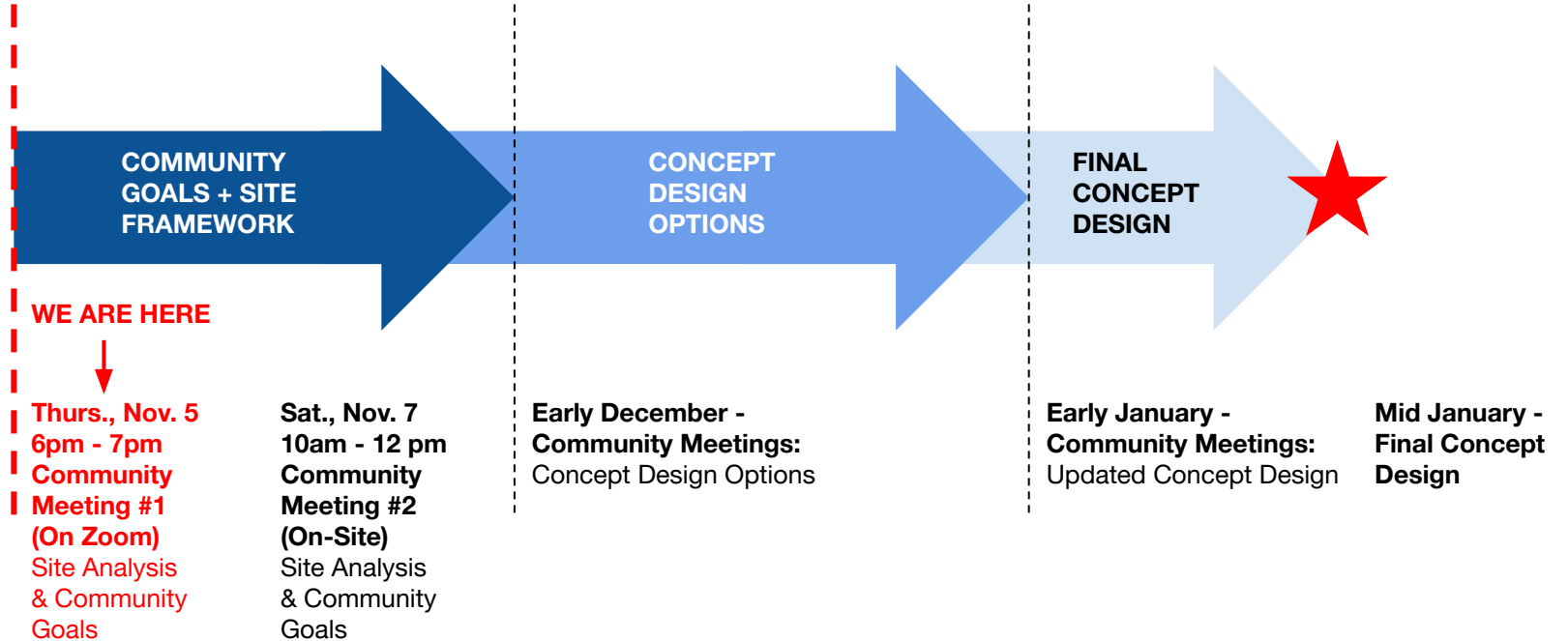
Community-Led Concept Design Schedule

November

December

January

February



Ways to Stay Involved

- **In-person Community Meeting** at the Water Tower this Saturday, Nov. 7th, 10am to 2pm (masks and social distancing observed)
- **Future community meetings** to be scheduled in December and January
- **Join *Friends of the Roland Water* mailing list** for updates, future meeting notices, and volunteer opportunities: <https://rolandwatertower.org/#contact>
- **Give feedback** via our digital survey or on paper in the suggestion box on the Water Tower construction fence!



Drop off sketches, ideas, or comments in the suggestion box on the Water Tower construction fence!

A Brief Tower History

Brief Timeline



1850s:

The Italianate style of the Tower becomes one of the most popular in Baltimore for decades to come.

1905:

Water Tower built to supply Hampden. Water flowed from Druid Hill Lake to the Tower and from there into homes.

1930:

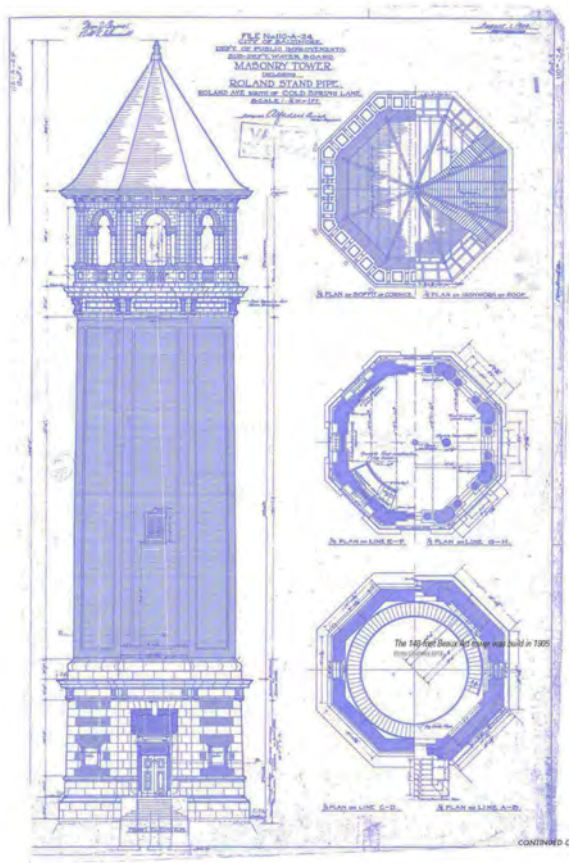
Water Tower replaced by Reservoir system; the Tower becomes a turnaround for the Trolley System.

1960s:

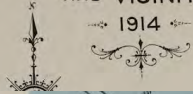
Trolley System replaced by buses; the Tower Turnaround is decommissioned.

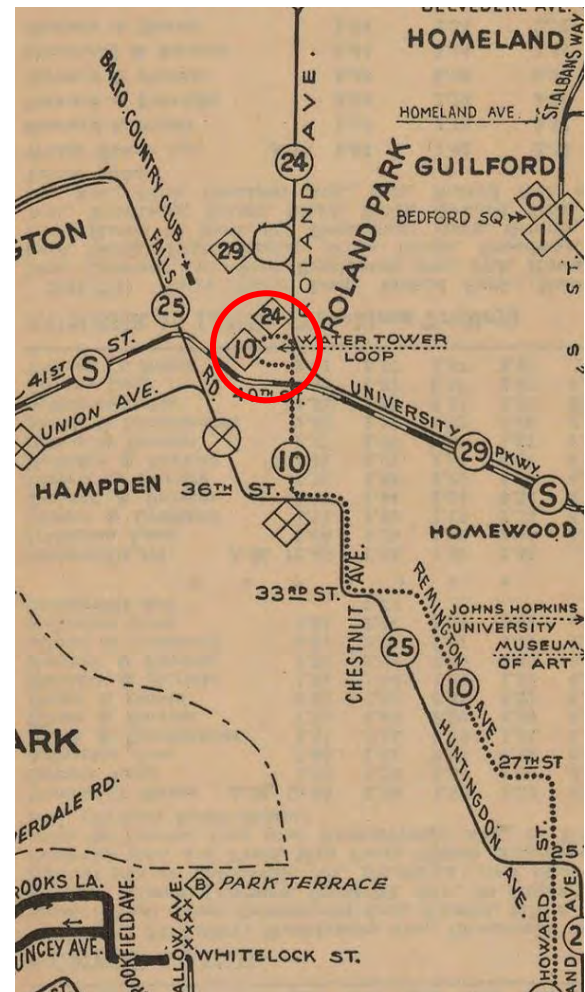
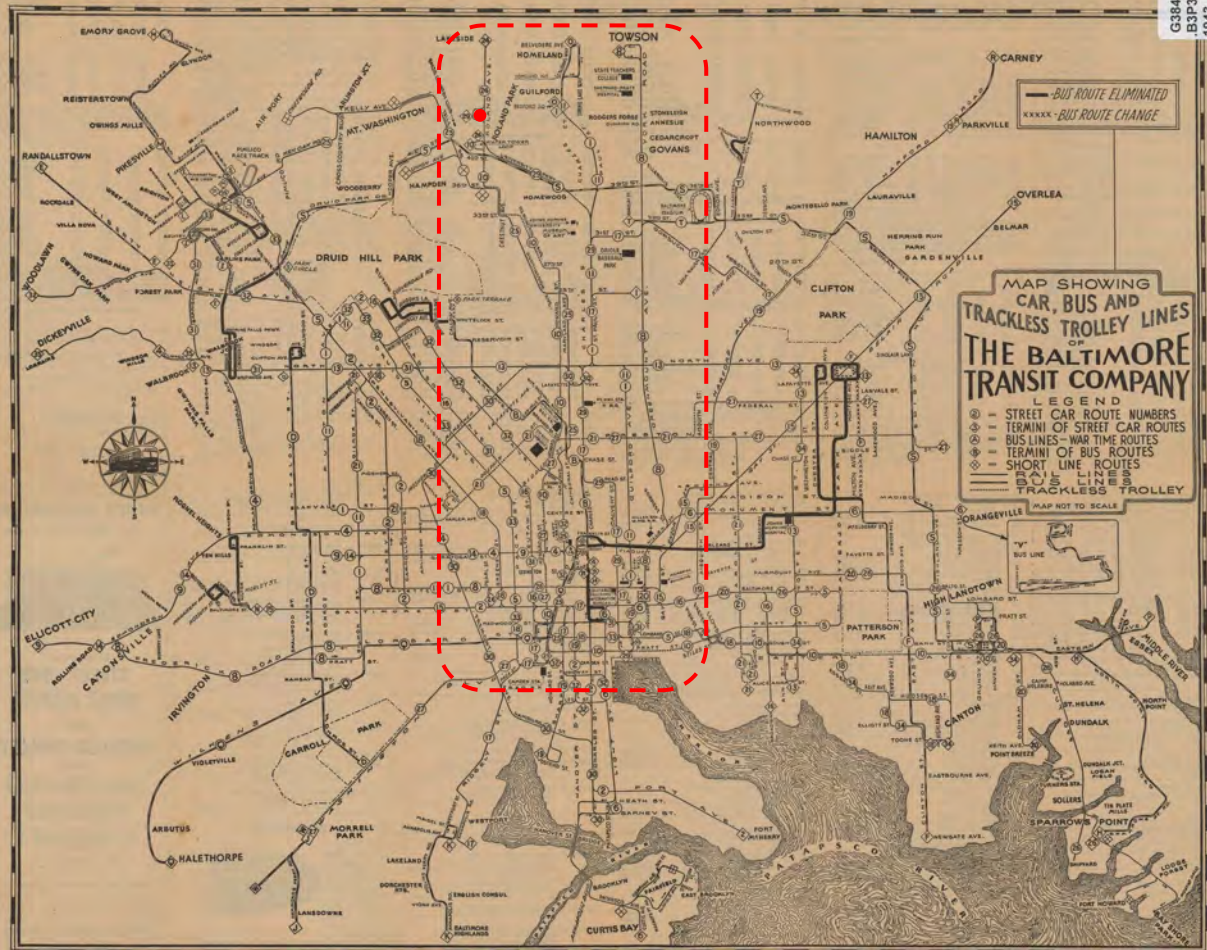
2008-today:

The City of Baltimore designates the Tower as an Historic Landmark, and restoration and open space efforts have been ongoing.



1914

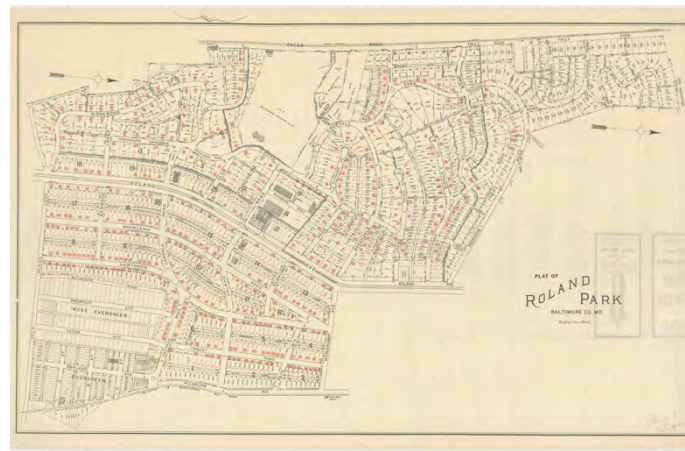








At the Junction of Historic Neighborhoods





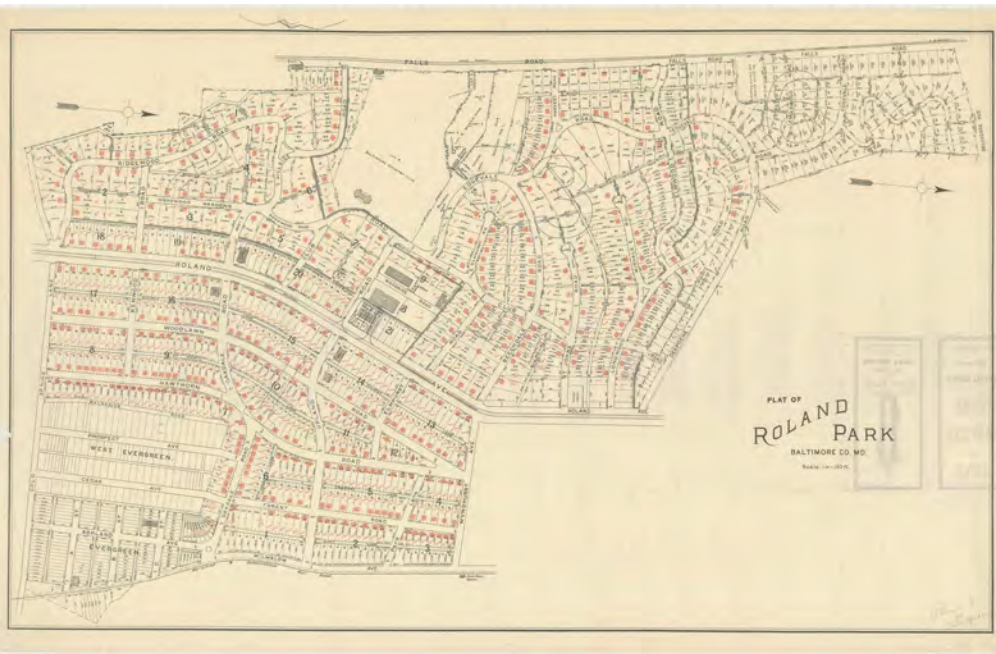
Hoes Heights



Hampden



Roland Park

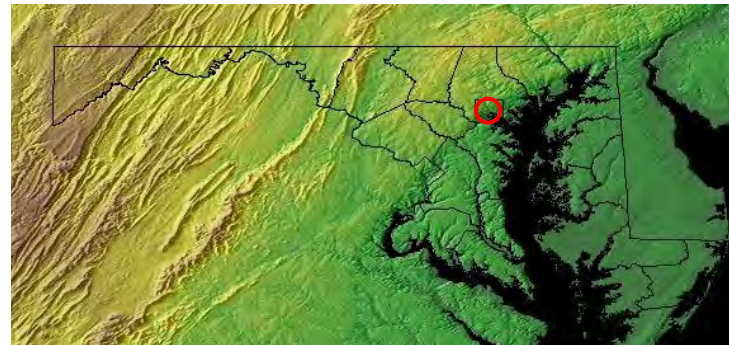


Olmsted & Civic Legacy



Baltimore Piedmont Ecology

The Fall Line



Piedmont Hills and Valleys



**This Was Once
A Forest**



Peregrine Falcon Habitat

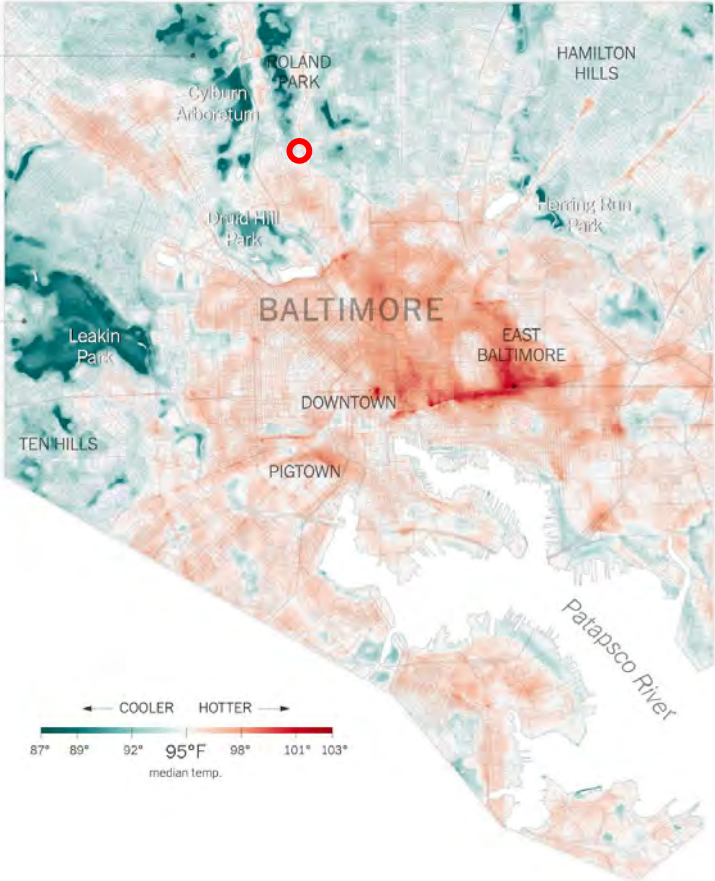


Benefits of Tree Canopy



Benefits of Tree Canopy

Cooler: Neighborhoods next to parks and those with plenty of tree cover saw significantly cooler temperatures on a hot summer afternoon: **as low as 87°F.**



Hotter: On the same day, residential neighborhoods east of downtown saw hotspots reach **over 101°F.**

Plan Ahead to Maintain Your Canopy



American Elms develop Dutch Elm Disease, leading to the loss of more than 75% of the trees across the U.S. by 1989



Elm trees replaced in many cities with Zelkova trees, a species native to East Asia



What will replace the aging Zelkovas? To consider: tolerance for **increasing** heat and urban conditions, shade coverage, habitat value ...

Site Analysis

Neighborhood Context



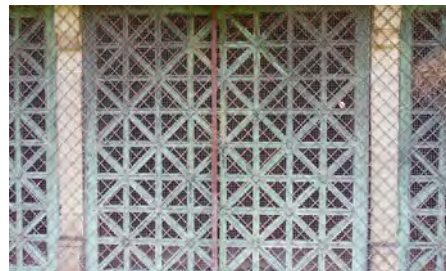
Density



Green Space Network



Material Context





Evans Chapel Road entrance



Roland Avenue entrance



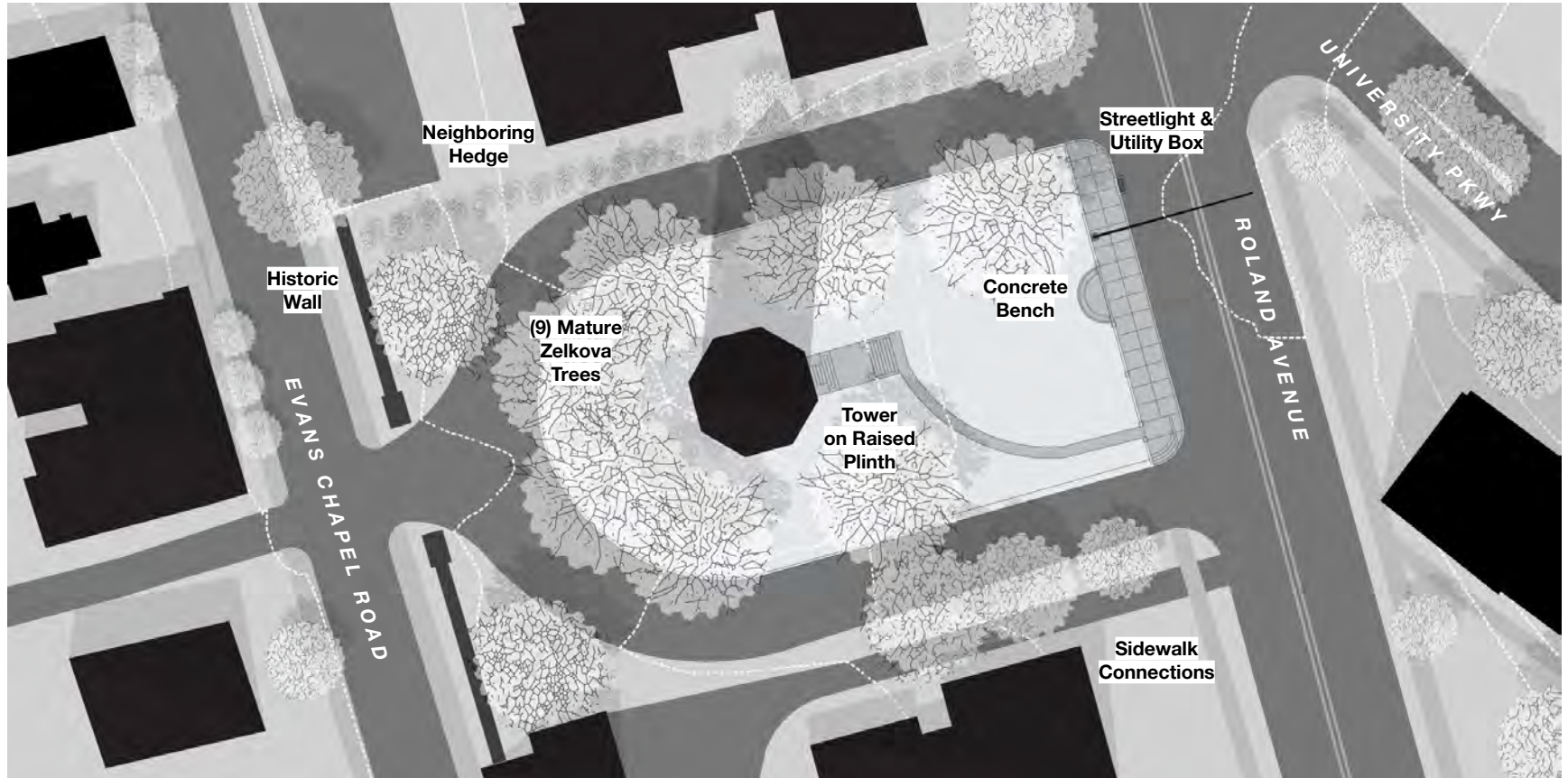








Existing Conditions



Topography



Topography





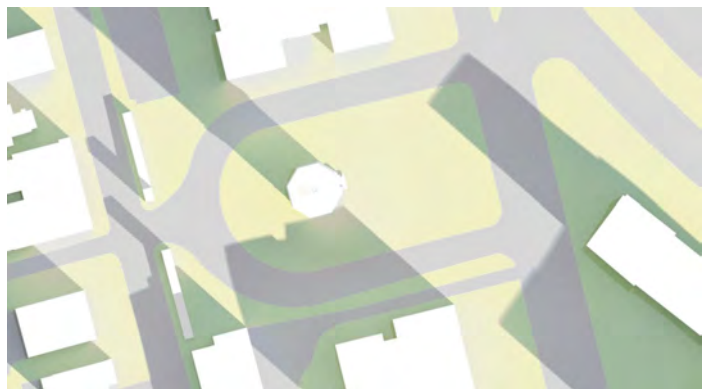
Sun & Shade



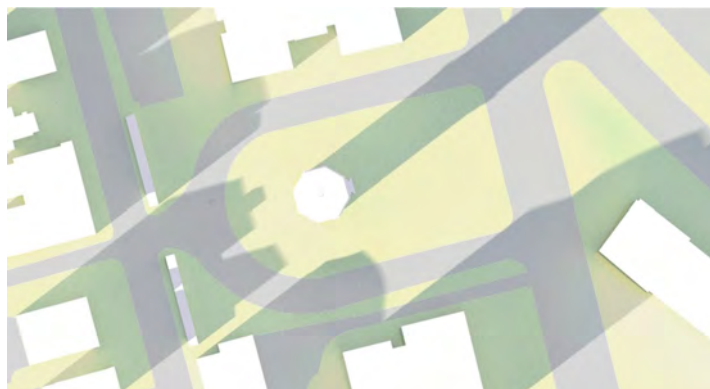
Summer Morning



Summer Afternoon



Winter Morning

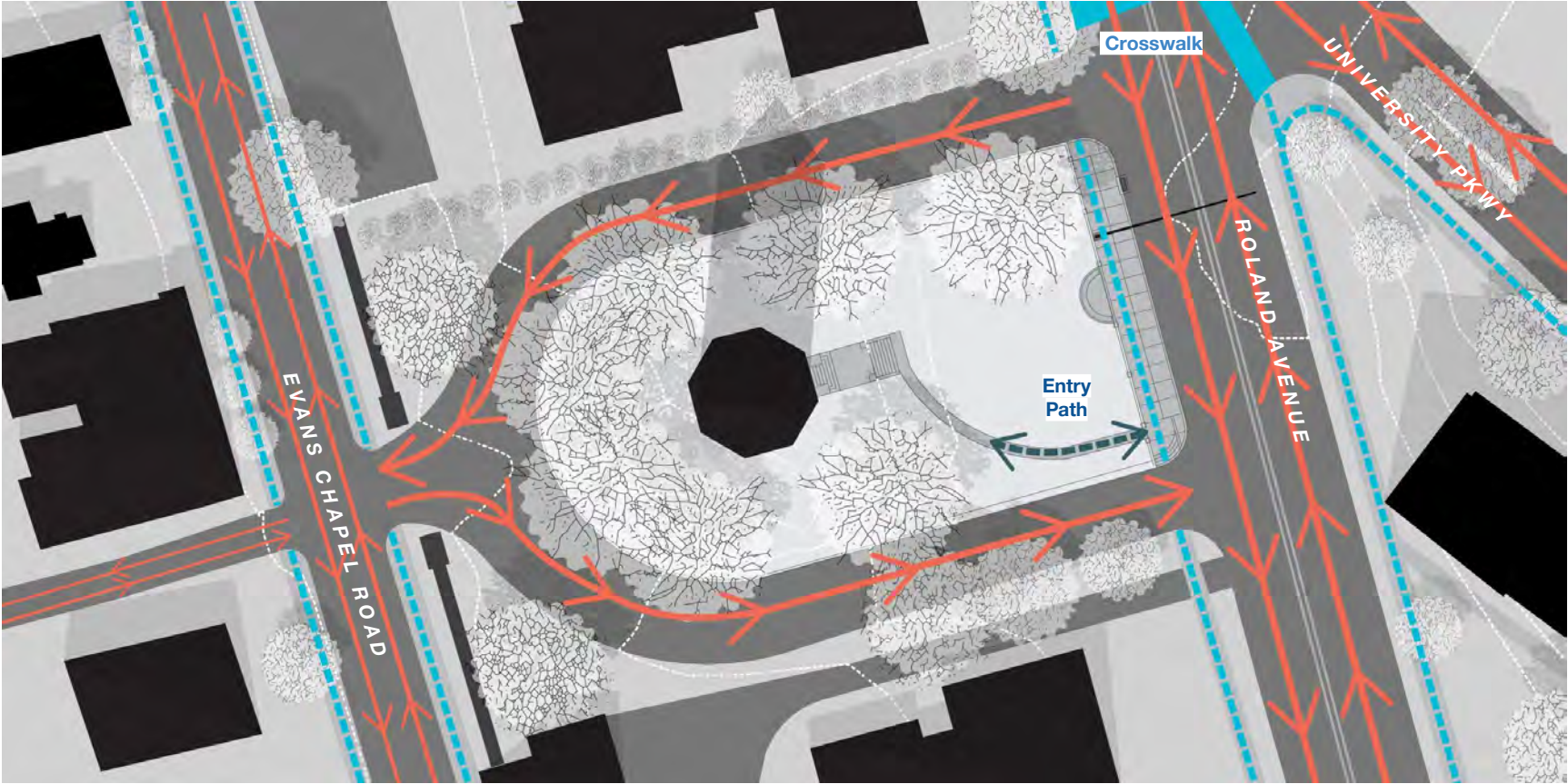


Winter Afternoon

Neighborhood Circulation



Circulation



Breakout Discussions

Discussion Questions

- a. What community needs and histories should inform the park?
- b. What are you most excited to see in the park?
- c. What gives you anxiety about the park?

Ways to Stay Involved

- **In-person Community Meeting** at the Water Tower this Saturday, Nov. 7th, 10am to 2pm (masks and social distancing observed)
- **Future community meetings** to be scheduled in December and January
- **Join *Friends of the Roland Water* mailing list** for updates, future meeting notices, and volunteer opportunities: <https://rolandwatertower.org/#contact>
- **Give feedback** via our digital survey or on paper in the suggestion box on the Water Tower construction fence!



Drop off sketches, ideas, or comments in the suggestion box on the Water Tower construction fence!

Google Slides Survey Link:

forms.gle/M3gRTJfFw9qCEVsE7

THANK YOU!