

A scenic view of a tree-lined street in autumn. The street is paved and has a white dashed line down the center. On the left, there are trees with vibrant orange and red leaves. On the right, there are trees with yellow and green leaves. In the background, a tall, white, square water tower with a pointed roof and arched windows is visible. The sky is clear and blue. A green street sign for 'W. COLD SPRING LN' is visible on the left side of the street. Several people are riding bicycles on the street, and a few cars are parked or driving in the distance. A red and white striped construction barrier is visible on the right side of the street. A yellow sign with the text 'UNEVEN PAVEMENT' is visible on the right side of the street.

The Roland Water Tower

Tonight's Agenda



- **Brief History of the Tower**
- **Stabilization Project**
- **RWT Park**
- **Next steps**
- **Questions/Comments**

History of the Tower



- Built in 1905 to provide water for Hampden
- In 1930, the reservoir system replaced towers
- In 1930's the Tower became the turnaround spot for the streetcars
- In 1960's, buses replaced streetcars

History

- Since 1960, the Tower has been out of use
- In 2009, the City put up a chain link fence to protect pedestrians
- Friends of the Roland Water Tower was formed in 2009
- In 2010, Greater Roland Park Master Plan identified the RWT as top 3 Open Space Projects for the Roland Park Community Foundation

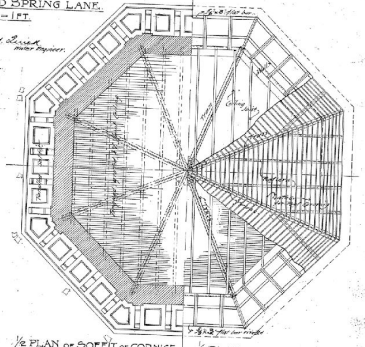
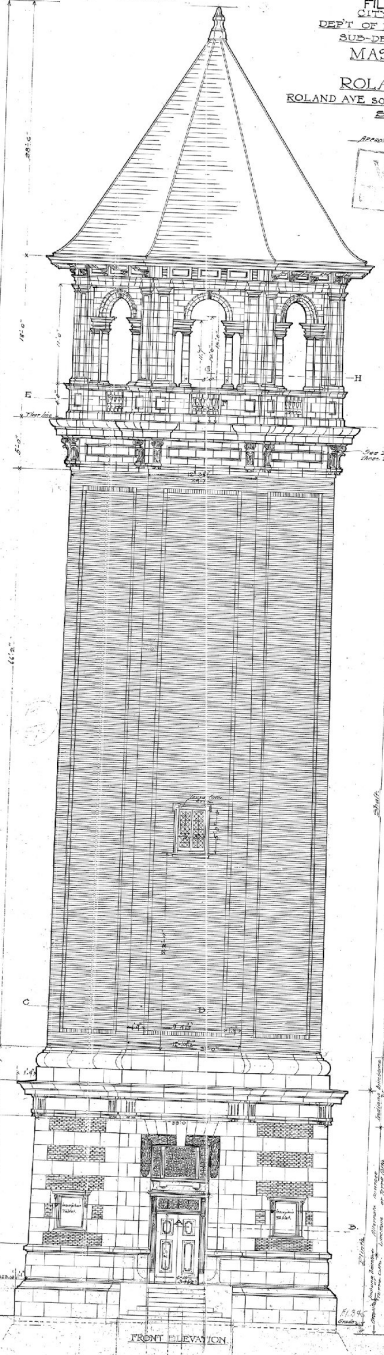
John B. Brown
1117 N. Lombard

August 1, 1904

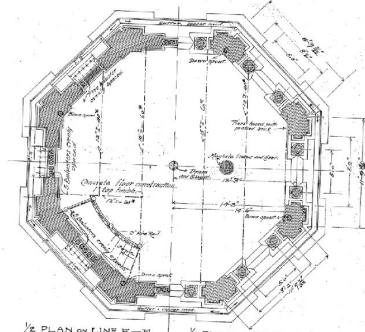
FILE No. 110-A-24.
CITY OF BALTIMORE.
DEPT. OF PUBLIC IMPROVEMENTS.
SUB-DEPT. WATER BOARD.
MASSONRY TOWER.
INCLUDING
ROLAND STAND PIPE.
ROLAND AVE. SOUTH OF COLD SPRING LANE.
SCALE: 1/4" = 1'-0"

110-A-24
Sheet 1

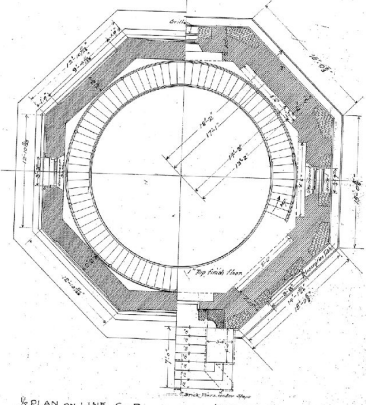
110-A-24
Sheet 1



1/2 PLAN OF ROOF 1/2 PLAN OF IRONWORK OF ROOF



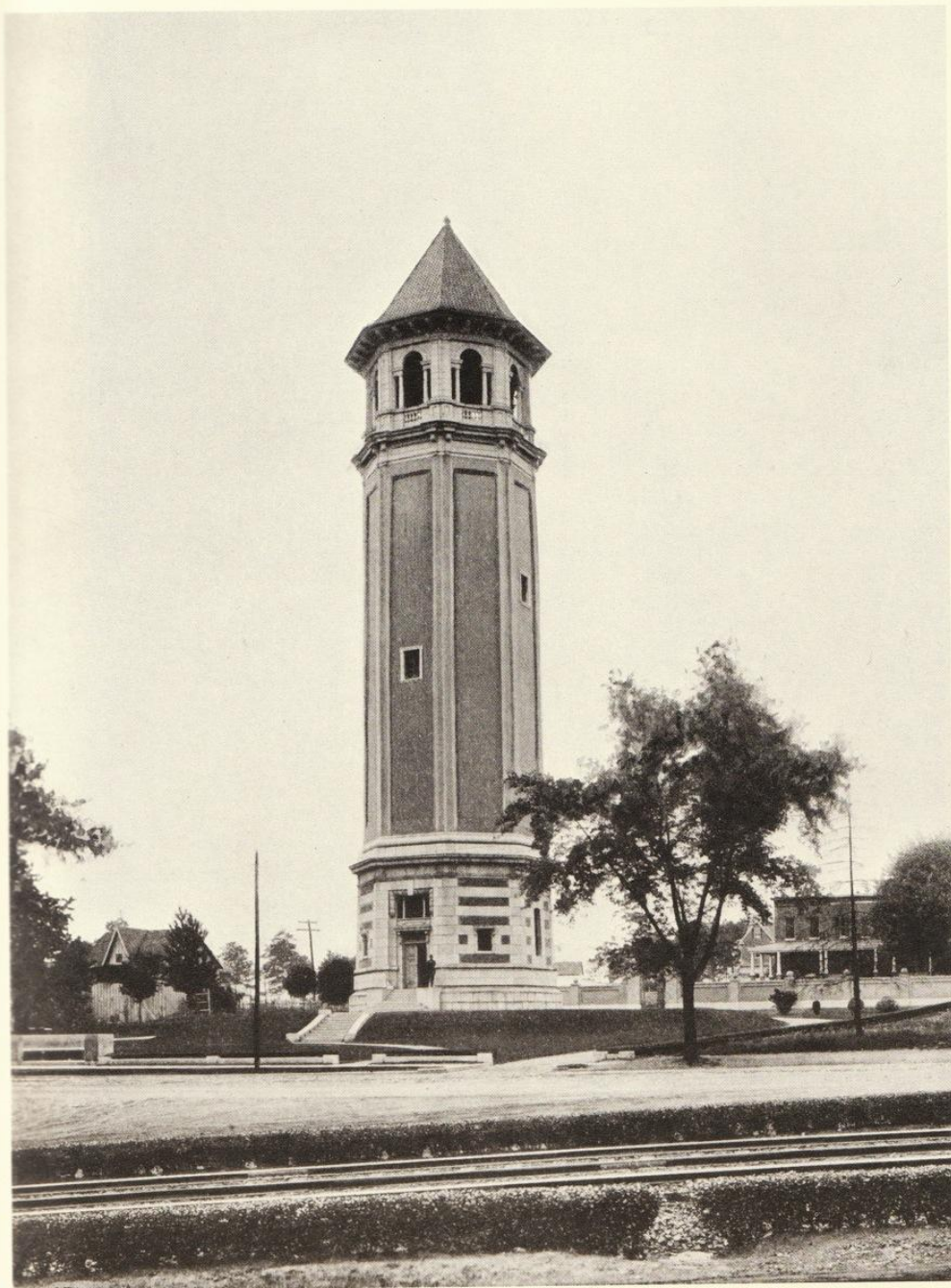
1/2 PLAN ON LINE E-F 1/2 PLAN ON LINE G-H



1/2 PLAN ON LINE C-D 1/2 PLAN ON LINE A-B

FRONT ELEVATION





CITY WATER TOWER NEAR ROLAND PARK



The Stabilization Project



Stabilization History

- In 2008, the City designated the Tower as a City Landmark Building
- In 2011, RPCF Received a Preservation grant to do a structural engineering analysis
- In 2011, Tower listed as an endangered site by Preservation Maryland
- In 2012, 300 bags of debris removed and screening installed, \$37k by RPCF







Stabilization Team

- City Hired JMT design firm in 2018
- Design completed in late 2019
- RPCF hired Lewis Contractors was in 2019
- Tom McCracken is the Owner's Rep for RPCF

What will the work include?

- \$1.4 million
- Top and bottom
- Roof tiles, balustrades, eaves of the roof, cleaning, screens
- New door, windows
- Will not be able to walk to the top
- Removal of the fence

Show me the Money

- Public and private funds
- BIG THANKS TO SANDY ROSENBERG
- Awarded two State Bond Bills for \$250k and \$75k that were matched by the community
- The City is paying for the design and ongoing maintenance to the Tower. \$337,000 which was a part of the demolition funds. City put in an addt'l \$49k
- Two grants pending.

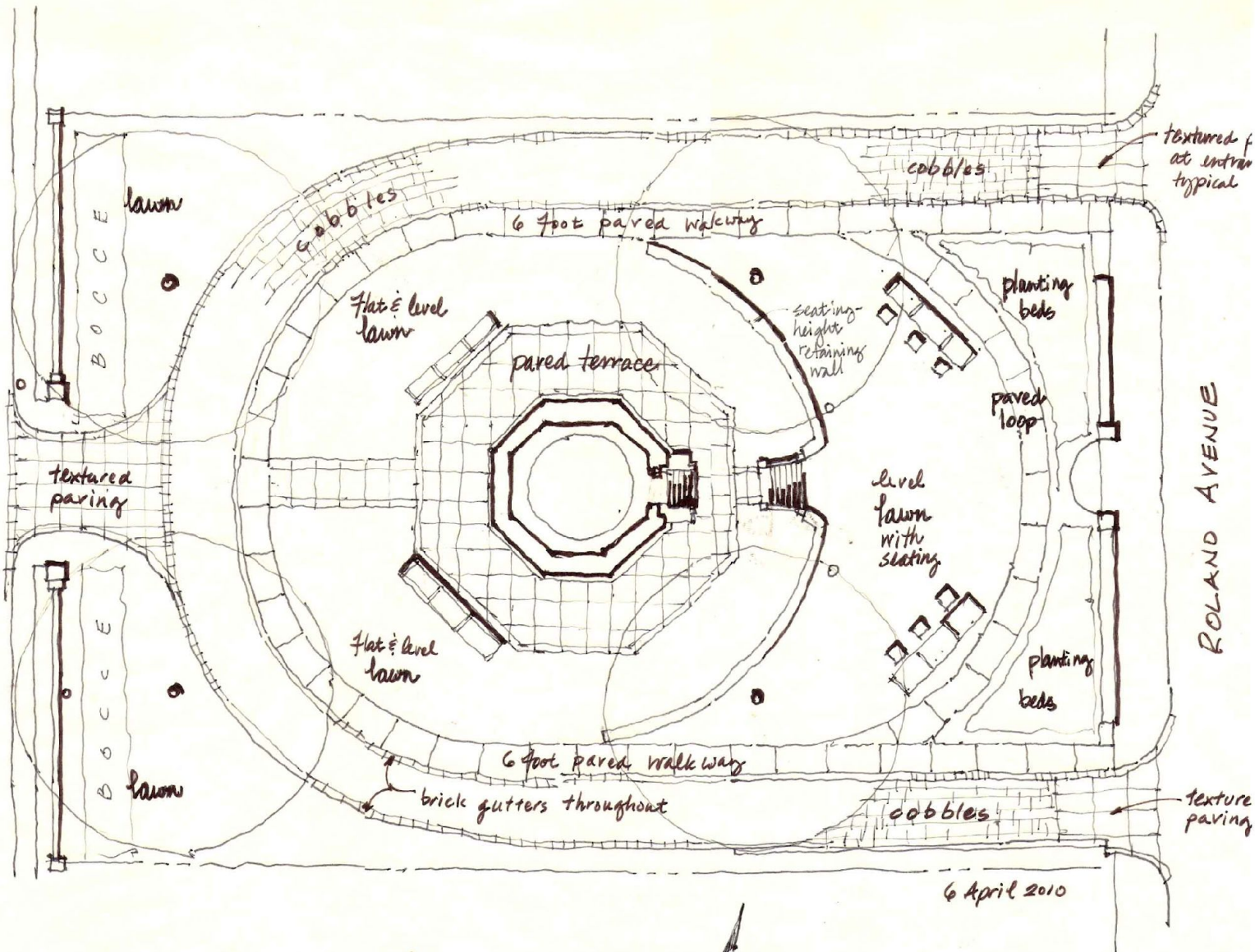






EVANS CHAPEL ROAD

PROVIDENCE ST.

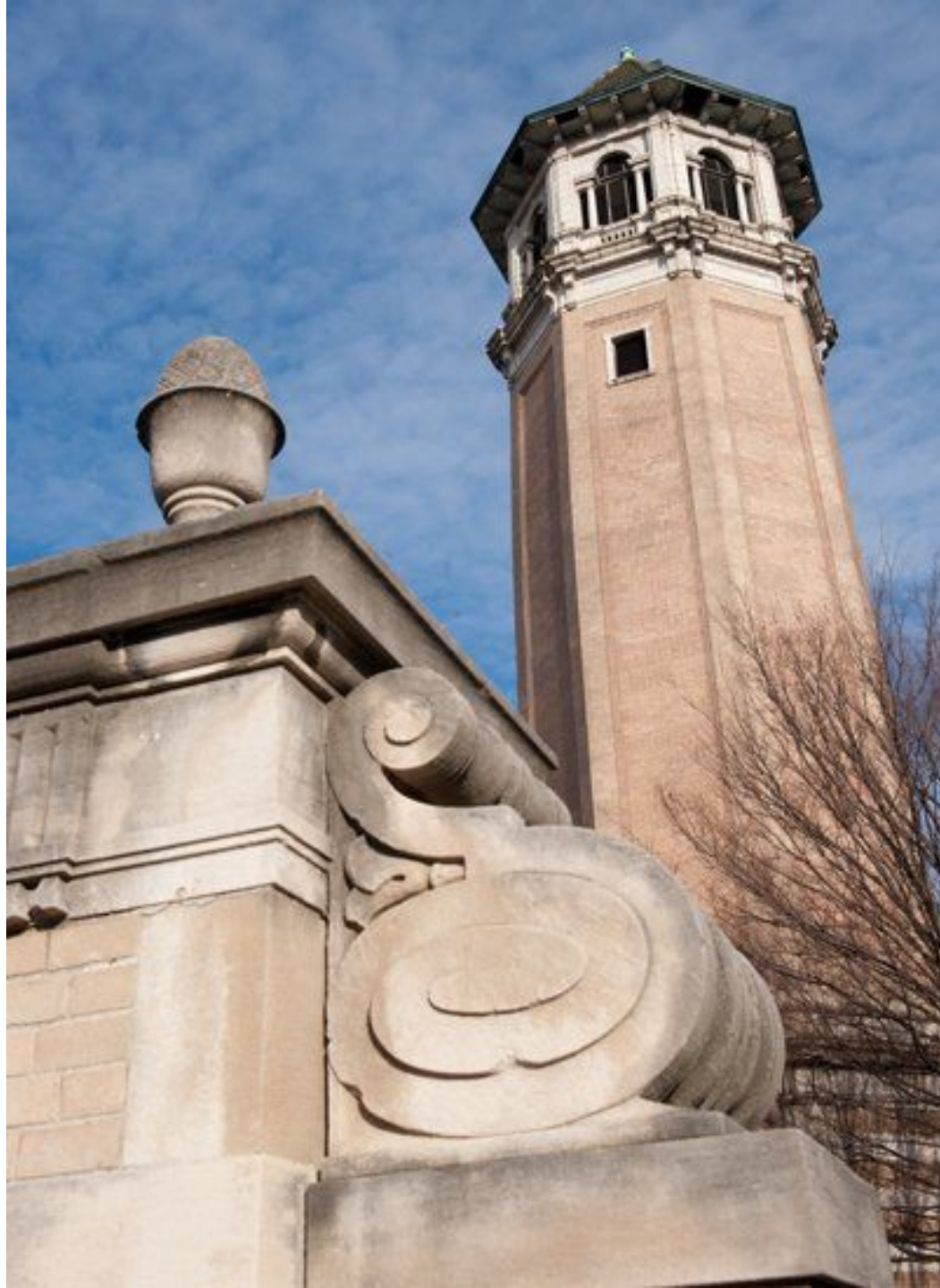


Next Steps



Next Steps

- Trees will be trimmed on September 29th
- Scaffolding will go up early October
- Construction will take 7 months subject to weather delays
- Small roads around the Tower will be closed
- Work will take place from 7 am – 3 pm
- Workers parking will mostly be inside the construction site
- Community Planning Process for Park will begin this fall
- Need to raise funds for the park

















Questions/Comments?